

# CERTIFICATE OF LOCATION OF GOVERNMENT CORNER

NORTHEAST Corner of Section 4, Township 107, Range 39, 5TH P.M.

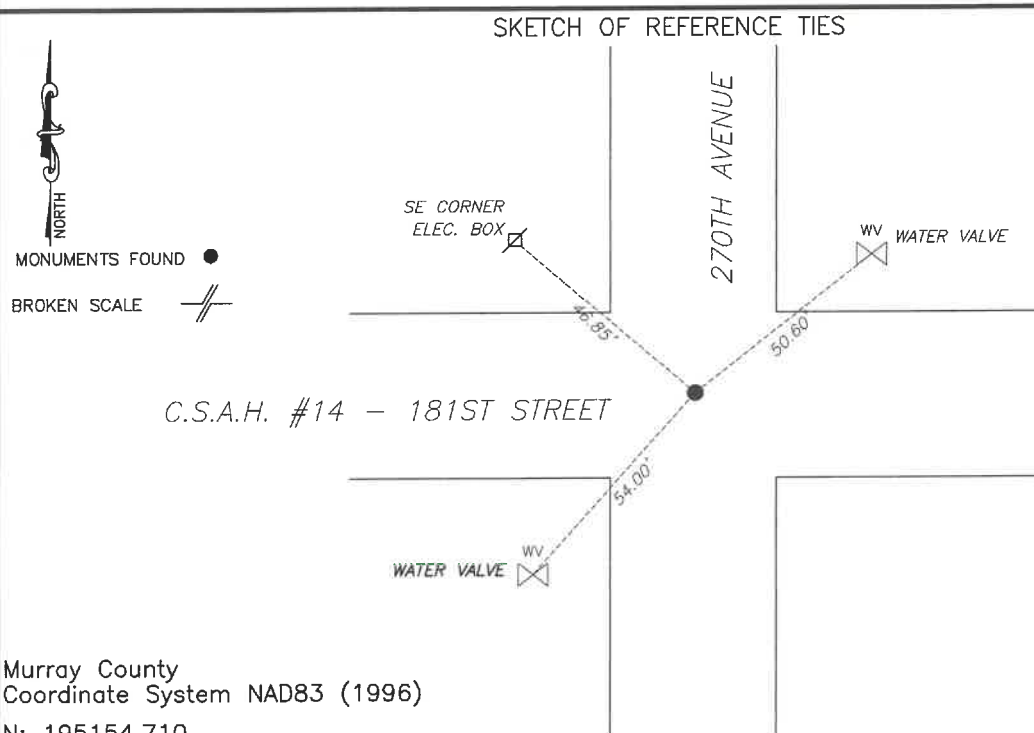
STATE OF MINNESOTA, County of MURRAY

At the corner location shown on the sketch:

☐ On 6/4/2024 found a iron with broken cap over a concrete monument. Ties are good.  
DATE

☒ left monument as found, ☐ lowered monument, ☐ removed monument (explain)

☐ On \_\_\_\_\_ placed a \_\_\_\_\_  
DATE



Murray County  
Coordinate System NAD83 (1996)

N: 195154.710  
E: 564062.056

WGS84  
LAT: 44°06'31.6923"  
LON: -95°31'22.0392"

Statement of evidence relative to this corner location is on back of page.

I hereby certify that this document and the data contained herein was prepared by me or under my direct supervision.

Daniel L. Bueltel  
License No. 43844

3/12/2025  
DATE

MAR 13 2025

MURRAY COUNTY RECORDER

### Statement of Evidence

NORTHEAST CORNER SECTION 4, T107N, R39W of the 5th P.M.

In July of 1861, J.W. Myers layed out the original township lines.

On September of 1861, L. Brockmann did the original township subdivision.

In June 22, 1913 a survey by J.W. Woolstencroft notes a stone at the corner, the stone being on the south side of the grade of the road.

1940 - County records show a concrete monument.

On October 9, 1980 Gary Martin, LS 12967, found a concrete monument and placed a  $\frac{1}{2}$ " iron with seal #12967 over top of the concrete monument.

County records from August of 2013 show an iron with a suveyors cap at the corner.

In September 2020 Westwood Professional Services searched and found a No. 4 rebar with a broken cap. Located about 1.5 ft west of road intersection.

On June 4, 2024 Bueltel-Moseng Land Surveying found a  $\frac{1}{2}$ " iron with a broken cap. Iron is 1.5' west of road intersection.